



# U5 MINI Network Configuration Guide



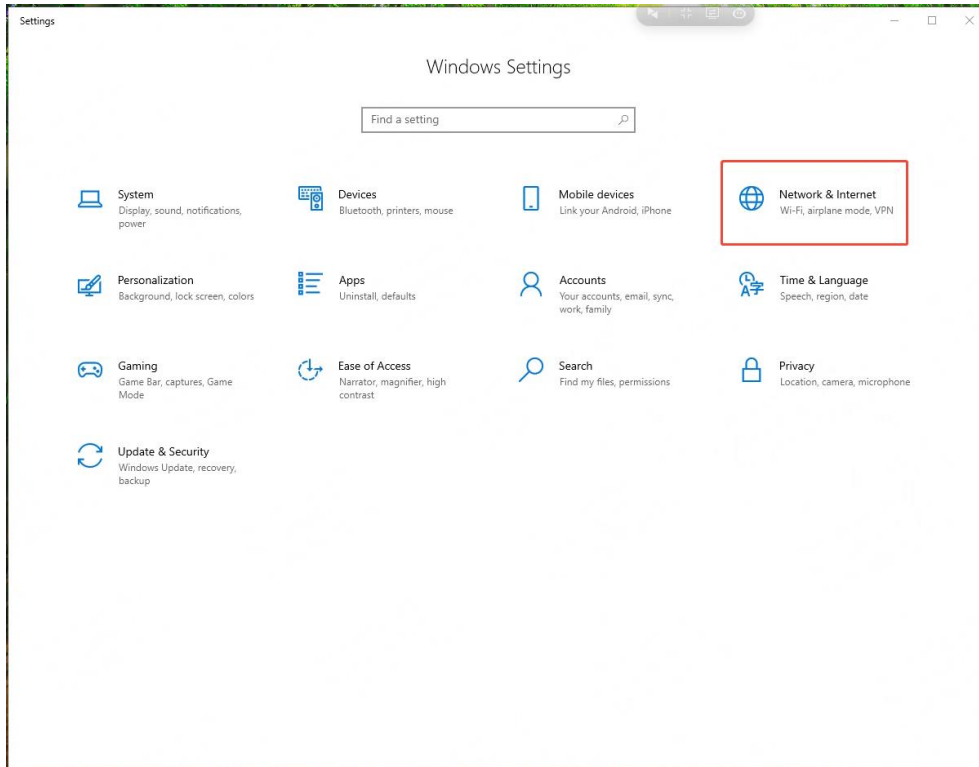
# Contents

---

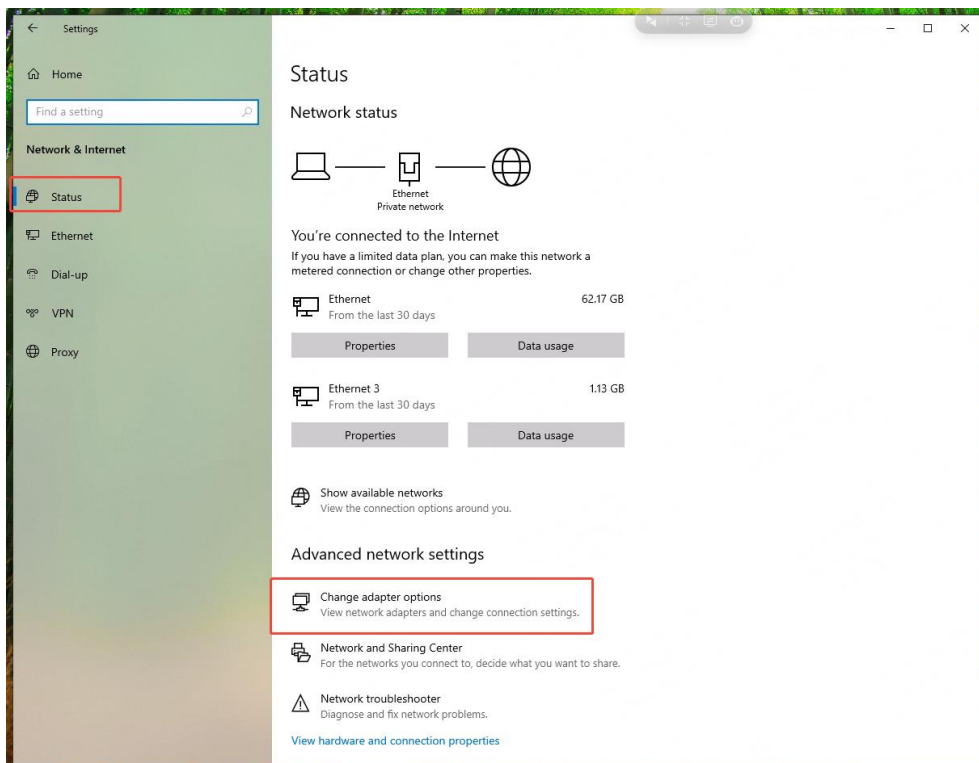
1 Windows 10 Network Configuration .....	1
2 Windows 11 Static IP Network Configuration .....	3
3 macOS Static IP Network Configuration .....	6

# 1 Windows 10 Network Configuration

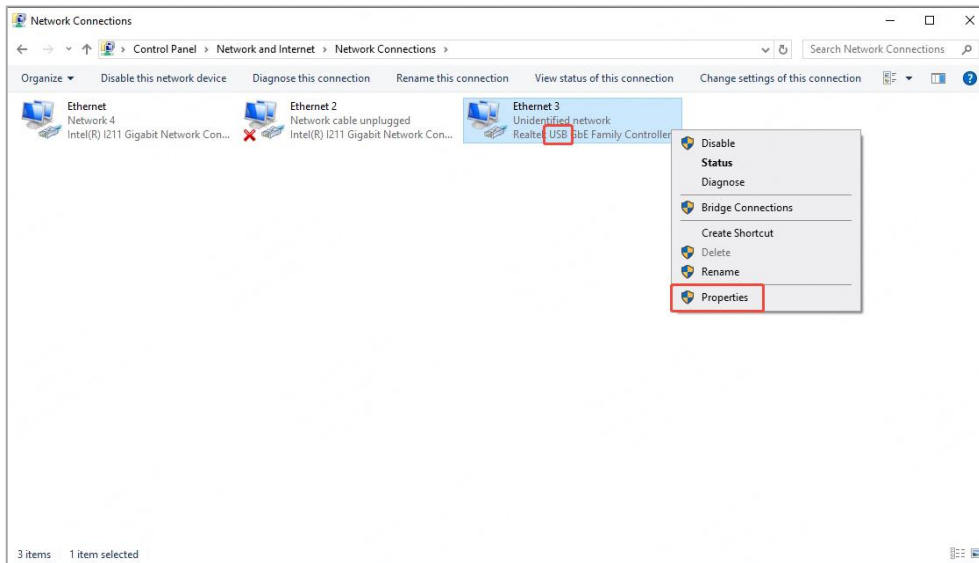
Step 1 Open Settings, and click Network & Internet.



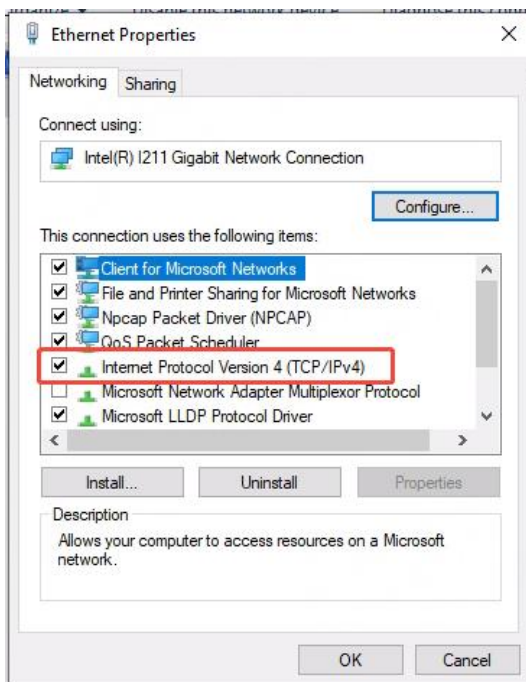
Step 2 Click **Status**, then click **Change adapter options** to open the network connection settings.



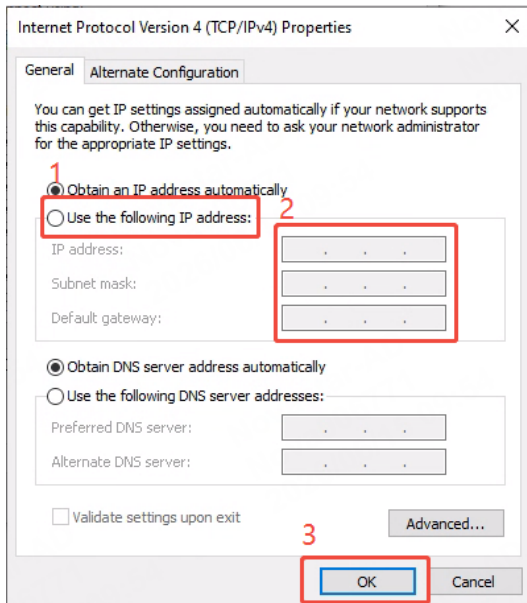
Step 3 Select the Ethernet corresponding to the network cable (Ethernet port with USB), right-click it, and select **Properties**.



Step 4 Select Internet Protocol Version 4 (TCP/IPv4) and double-click it.

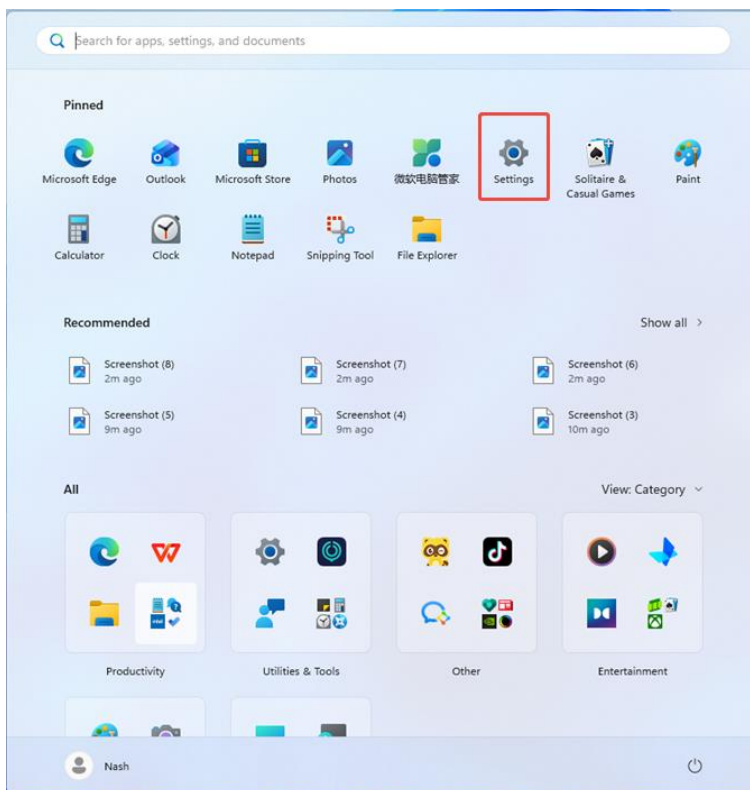


Step 5 Select **Use the following IP address**, enter the IP address and other information in the corresponding input boxes, and click **OK** to complete the configuration.

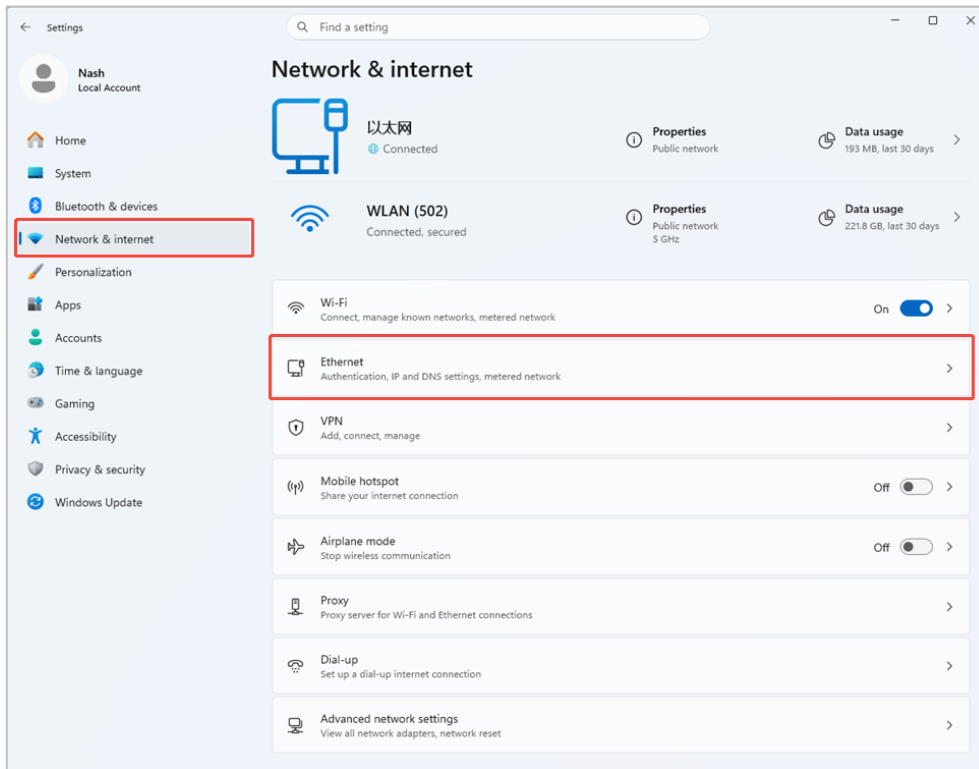


## 2 Windows 11 Static IP Network Configuration

Step 1 Open the settings page: Click **Start** in the lower-left corner of the taskbar and click **Settings**, or directly press the shortcut key **Win+I** to open it quickly.

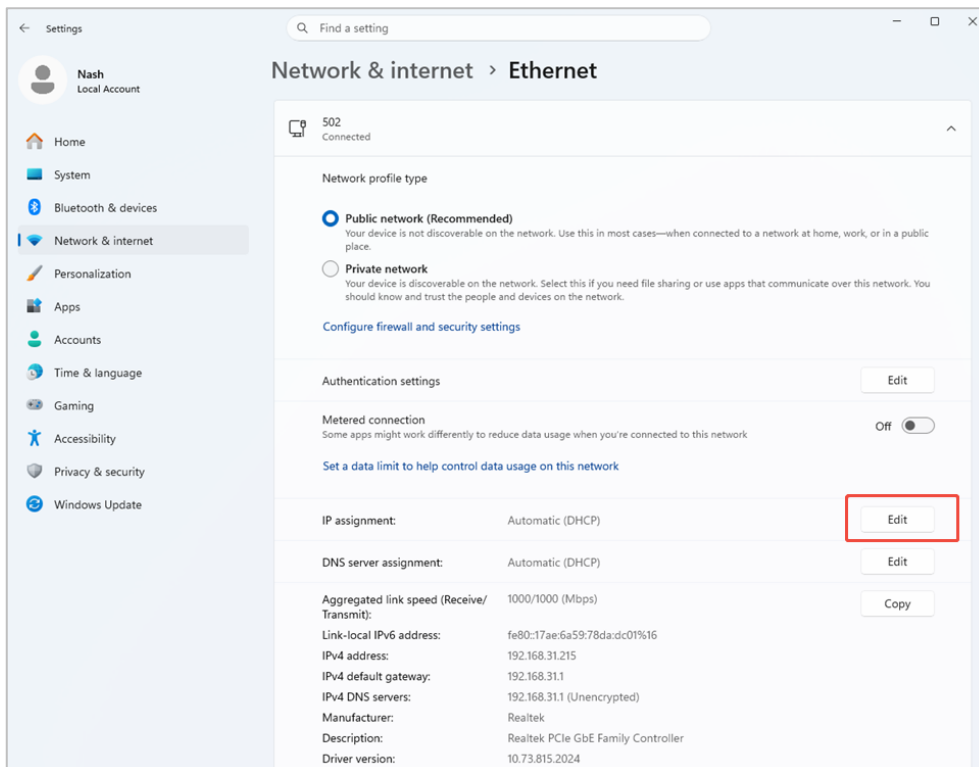


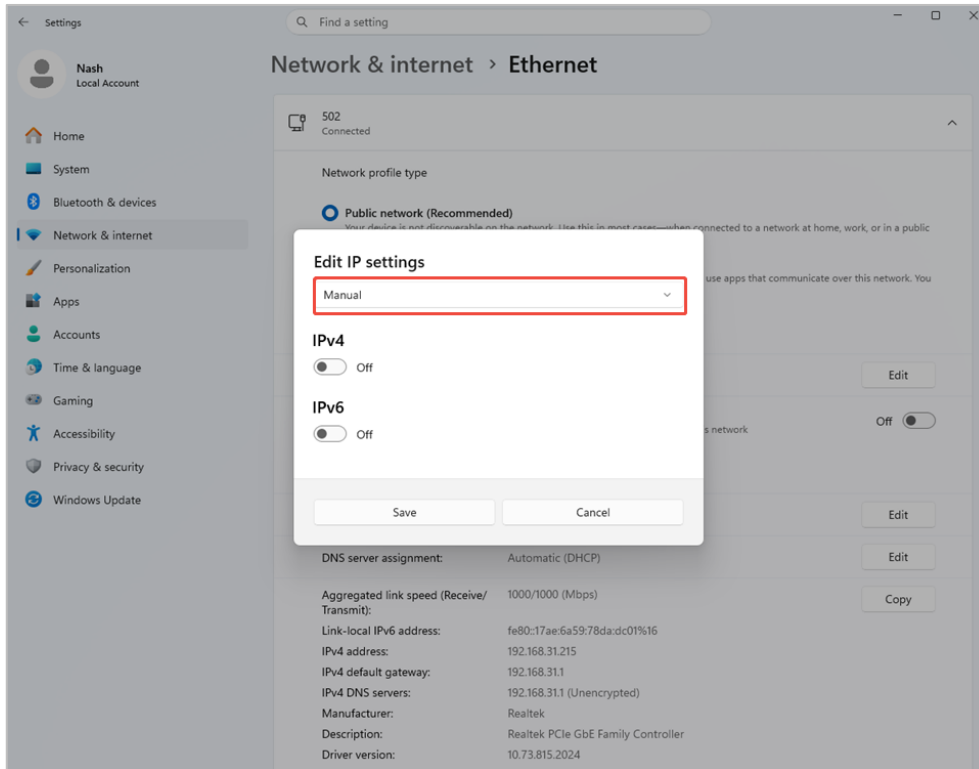
Step 2 Enter the network settings page: Click **Network & internet** in the left sidebar, and the right side will display the currently connected network (Ethernet / Wi-Fi) and its status information.



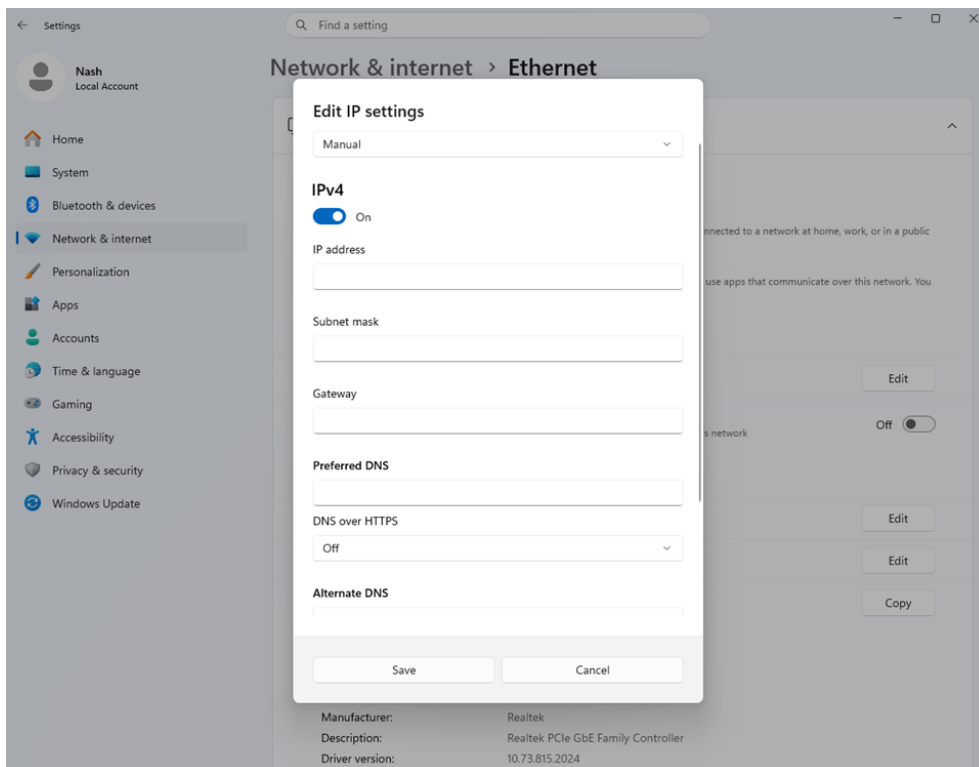
Step 3 Open the network adapter options:

If configuring a wired network, click **Ethernet** on the right, click **Edit** next to **IP assignment**, and change it to the manual mode.





Step 4 Configure the static IP information: Turn on the **IPv4** toggle, sequentially enter the IP address, subnet mask, and default gateway provided by the network administrator, and then click **Save**.

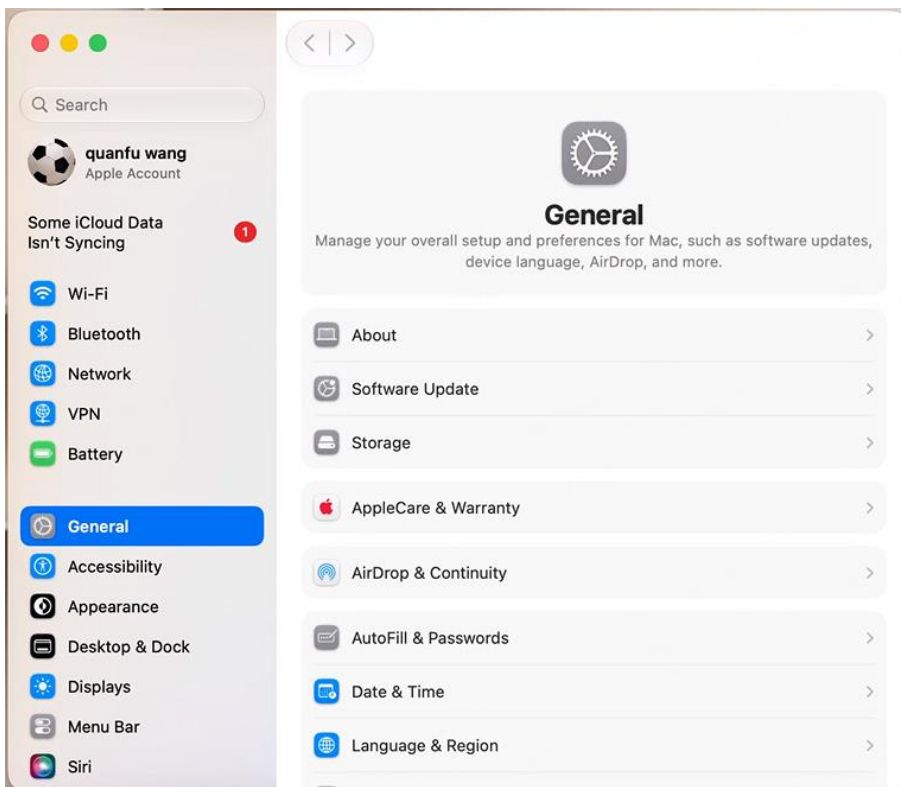


### 3 macOS Static IP Network Configuration

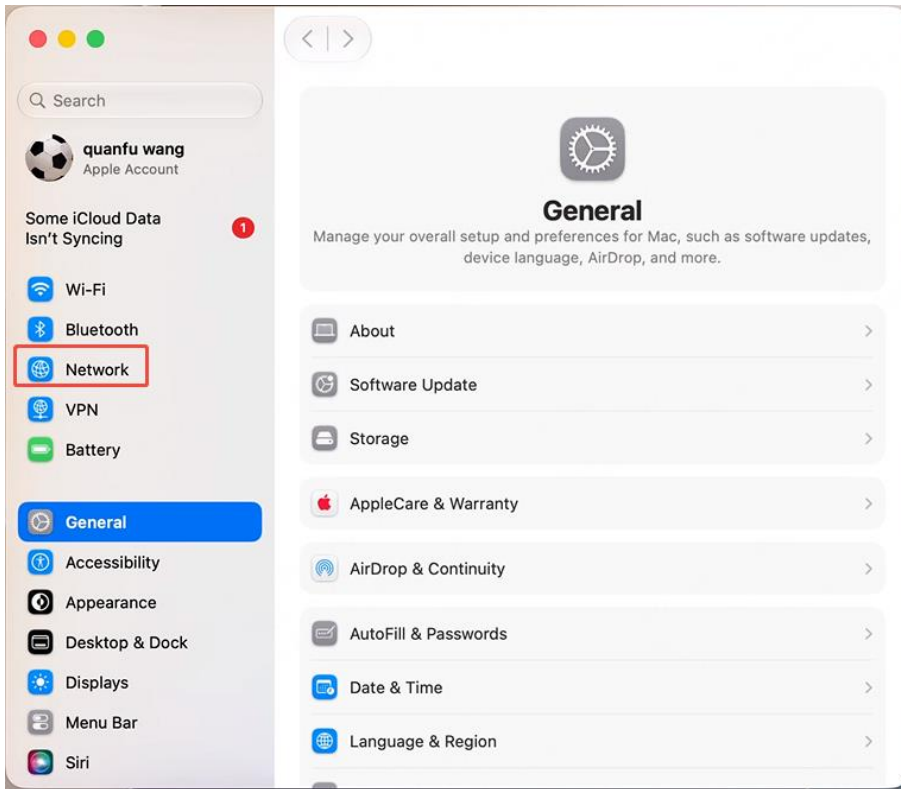
Step 1 After the connections, the Mac system will prompt about an external device connection. Select **Allow**.



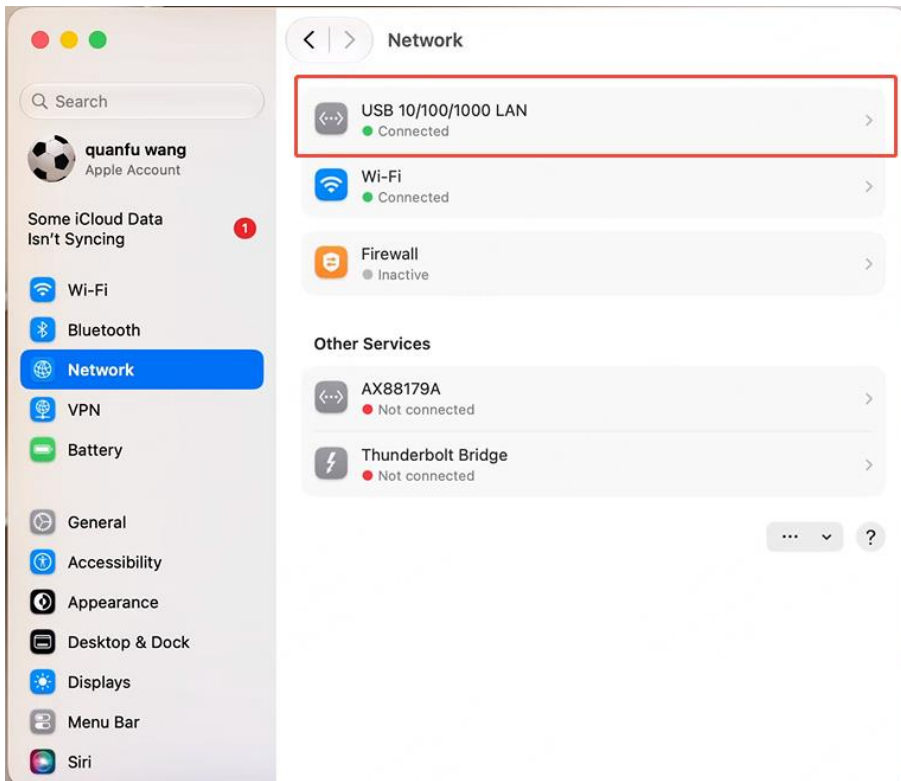
Step 2 Open the system settings page: Click the Apple icon in the upper-left corner of the screen and select **System Settings**; or press the shortcut **Cmd+Space** to bring up **Spotlight Search**, enter **System Settings**, and press **Enter**.

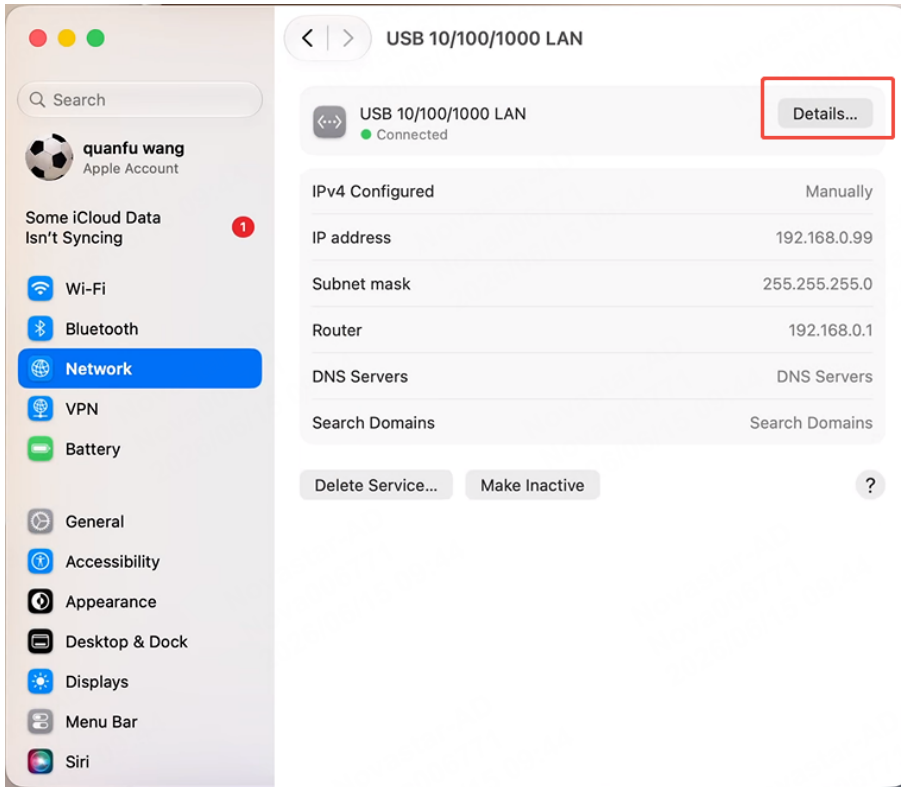


Step 3 Enter the network settings page: Find and click **Network** in the left sidebar, and the right side will display all available network connections (Ethernet / Wi-Fi).



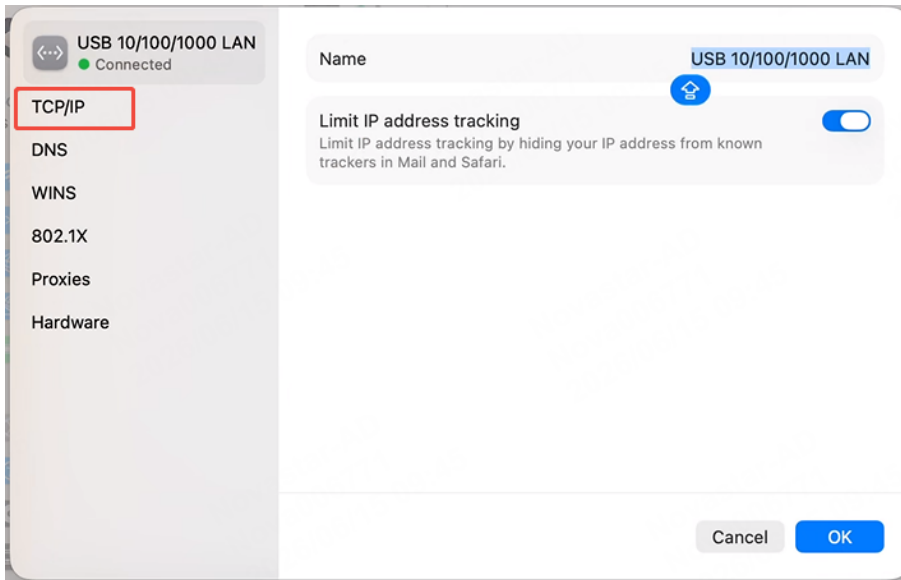
Step 4 Open and view the connection details: Select the network connection you want to configure from the list on the right (Ethernet / Wi-Fi marked as **Connected**), and click **Details** next to the connection name.



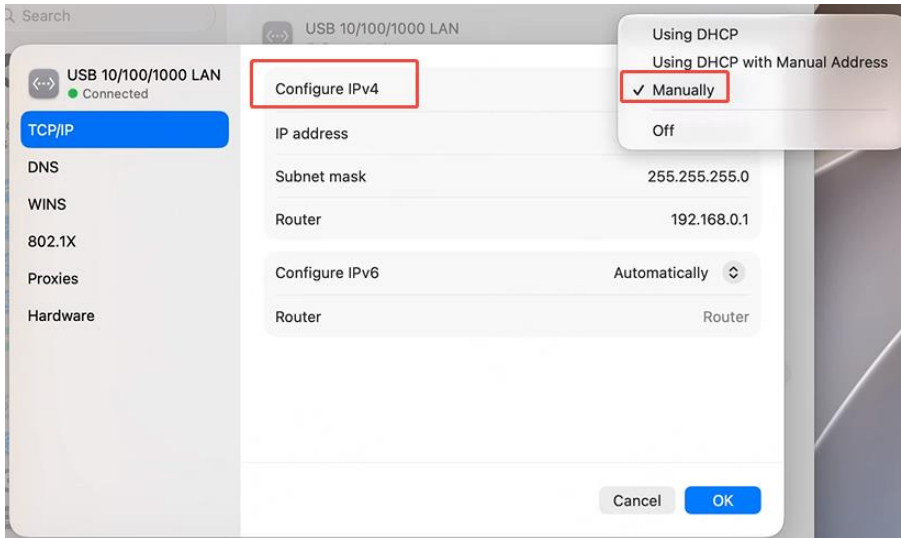


Step 5 Configure the TCP/IP parameters.

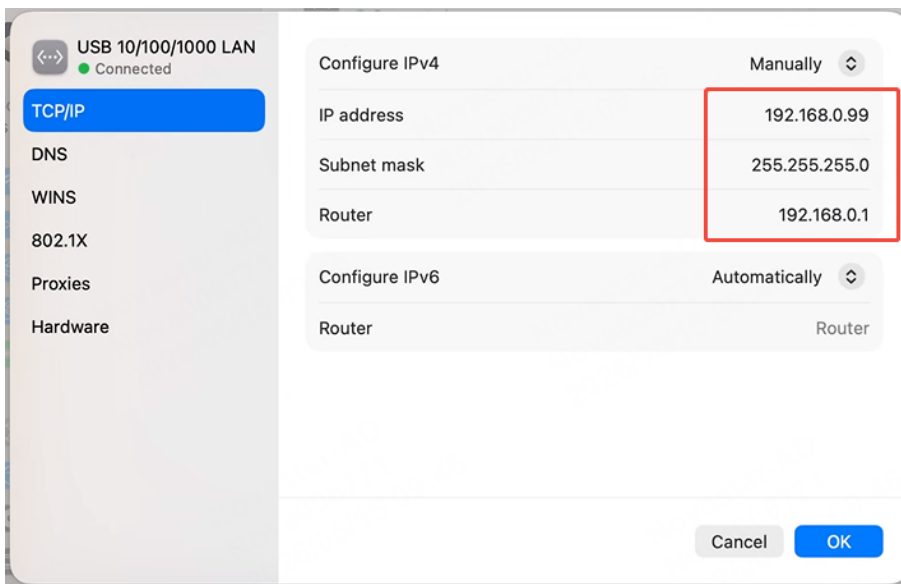
1. Select the **TCP/IP** tab in the pop-up window.



2. Change the **Configure IPv4** drop-down menu from **Using DHCP** to **Manually**.



3. Sequentially enter the IP address, subnet mask, and router (which is the default gateway in Windows systems).



Step 6 Save and apply configuration: Click **OK** at the bottom right of the window to return to the main network page, then click **Apply** at the bottom of the page. All configurations will take effect immediately.

