

# TX-10 LED-backlit Monitor 10"

## Touch Functionality in a Rugged Monitor

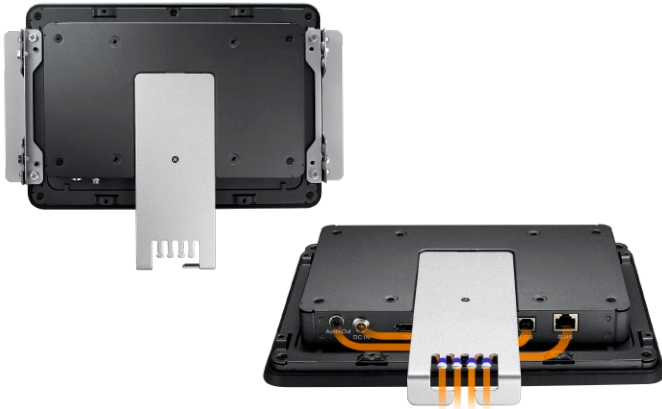


CABLE  
MANAGEMENT



The TX-10 Touch Screen Monitor, with its 10.1-inch, 10-point touchscreen, brings the experience of a tablet into the form factor of a monitor. Its foam seal design supports seamless integration into kiosks and its front-side IP65 rating protects the screen from dust and water. External mounting brackets are provided for installation in a wide variety of application environments—in a meeting room as a scheduling display, or in a number of public, commercial, and industrial applications. Allowing for either landscape or portrait orientation, the TX-10 is the perfect fit.



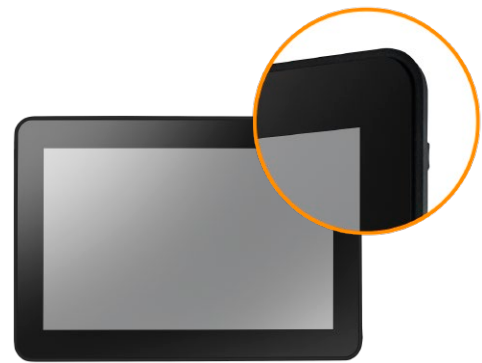


### Fit for Any Scenario

Knowing that each user's need is different, AG Neovo equipped its TX-10 with external open frame brackets that allow users to mount their monitor in their unique environment and for their particular purpose—in either landscape or portrait orientation. Cleanliness and orderliness are key in commercial and industrial settings. A lockable power adapter and cable managers at the back end of the monitor keep cables neat and in order, preventing loose, messy, or disconnected cords.

### Functional and Reliable for Real-world, Round-the-Clock Use

Using Projected Capacitive Touch Technology, the TX-10 has 10-point touch capability and gives the user a higher-precision, seamless touch experience. And this functionality is backed by a high level of reliability for 24/7 use. Front-side IP65 rating protects the screen from water and dust. On the outer edge of the monitor are a plastic resin bezel and a foam seal finish, ensuring a seamless, airtight fit and impact protection. Finally, with its high operating temperature (up to 50°C or 122°F), the TX-10 can keep working in adverse environments.



### Corporate, Retail, Public, Industrial: The TX-10 Covers all Environments

With its trifecta of versatility, functionality, and durability, the TX-10 can fit a wide variety of user environments and applications, whether it is a schedule display in a meeting room, an e-catalogue in a retail boutique, a self-serve system in a restaurant, a check-in display at a hotel, an information kiosk at the mall, or a screen in an automated industrial setting.

### Features

- Incorporates projected capacitive touch technology
- 10-point simultaneous multi-touch capability
- Flush touch screen makes surface neat
- Plastic resin bezel ensures an airtight fit
- Front-sided IP65 rating compliant to protect the screen from liquid and dust
- Glass used in the touchscreen has passed the UL60950 ball-drop test for high-impact resistance and durability
- Support high operating temperature of up to 50°C (122°F)
- Wired (up to 1.53 meters) OSD controller is ideal for remote OSD control
- VESA standard mounting interface and included side mounting brackets for flexible installation
- Flexible display orientation: Landscape/Portrait

## Specifications

## TX-10

### Panel

Panel Type	LED-Backlit TFT LCD (VA Technology)
Panel Size	10.1"
Max. Resolution	1280 x 800
Pixel Pitch	0.169 mm
Brightness	500 cd/m <sup>2</sup>
Contrast Ratio	1300:1
Viewing Angle (H/V)	170°/170°
Display Colour	16.2M
Response Time	5 ms
Surface Treatment	Anti-Reflection Treatment (Reflectance <1.5%), 3H Hard Coating

### Frequency

Frequency (H)	31 kHz-50 kHz
Frequency (V)	56 Hz-60 Hz

### Signal Input

DisplayPort	x 1
HDMI	1.3a x 1
VGA	15-Pin D-Sub x 1

### External Control

RJ45	x 1
------	-----

### Audio

Audio Out	Stereo Audio Jack (3.5 mm)
-----------	----------------------------

### Touch Screen

Panel Interface	USB (Type-B)
Technology	Projective Capacitive
Positional Accuracy	±2.5 mm
Multi-touch Plug & Play	10-point touch for Windows® 7 · 8 · 10
Single Touch Support by Driver	Windows VISTA/XP/2000/CE/XP Embedded · Mac OS 10.10-10.14
Multi-touch Support by Driver	10-point touch for Linux · Android 2.3-4.x

### Power

Power Supply	External
Power Requirements	DC 12V, 1.0A-3A
On Mode	8W (On)
Standby Mode	< 0.3W
Off Mode	< 0.5W

### Glass

Thickness	3.3 mm (0.13")
Reflection Rate	< 12%
Transmission Rate	> 85%
Hardness	> 7H

### Operating Conditions

Temperature	0°C to 50°C (32°F-122°F)
Humidity	20%-80% (non-condensing)

### Storage Conditions

Temperature	-20°C to 60°C (-4°F-144°F)
Humidity	10%-90% (non-condensing)

### Mounting

VESA FPMPMI	Yes (100 x 100 mm )
-------------	---------------------

### Dimensions

Product w/o Base (W x H x D)	260.7 x 183.4 x 39.4 mm (10.3" x 7.2" x 1.6")
Packaging (W x H x D)	370.0 x 325.0 x 160.0 mm (14.6" x 12.8" x 6.3")

### Weight

Product w/o Base	1.4 kg (3.1 lb)
Packaging	2.4 kg (5.3 lb)

### Regulation Approval

Certifications & Compliance	CE, LVD, BSMI, RoHS, REACH, WEEE
Power Adaptor Certifications	Delta/ ADP-36PH: CE, cUL/UL, RCM, WEEE, BSMI DCT/ DCT36W120300zz-C1: CE, FCC, cUL/UL, PSE, RCM, WEEE

### Accessories

Supplied	Power Adaptor, Power Cord, VGA Cable, DisplayPort Cable, USB Cable, Quick Start Guide, Wired OSD Controller, Side Bracket Package
----------	---

### Optional Accessories

Wall Mount (Landscape only)	WMK-01, PMK-01
-----------------------------	----------------

**Global Headquarters**

Taipei, Taiwan

**EMEA Regional Headquarters**

Capelle a/d IJssel, The Netherlands

**North & South America Regional Headquarters**

San Jose, CA, U.S.A.

**Asia-Pacific Regional Headquarters**

Taipei, Taiwan

**Canada Sales Office**

Vancouver, B.C., Canada

**China Sales Office**

Shanghai, China

**Czech Republic Sales Office**

Brno, Czech Republic

**Denmark Sales Office**

Støvring, Denmark

**Germany Sales Office**

Mechernich, Germany

**Italy Sales Office**

Livorno, Italy

**Poland Sales Office**

Warsaw, Poland

**Spain Sales Office**

Barcelona, Spain

**Ukraine Sales Office**

Lviv, Ukraine

[www.agneovo.com](http://www.agneovo.com)