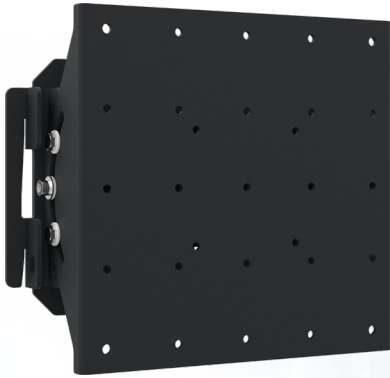


Tiltbare VESA wall mount



052.4050 Tilttable VESA wall mount (VESA 75, VESA 100, VESA 200-100, VESA 200)

All universal wall mounts are VESA compatible. Besides wall mounting, all our wall mounts can be used for ceiling mounting in combination with a tube set, and directly fastened to the stands thanks to its 170 x 140 mm mounting pattern. The mounts include fastening material, to secure the mount to the display. Furthermore they include a safety bar or fixation, offering you protection from theft; a padlock is to be added separately.

Tiltbare VESA wall mount

Features

Weight: 3.00 kg

Colour: Black

Maximum load: 50 kg

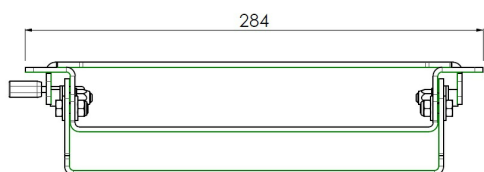
Screen position: Landscape

Type bracket/interface: VESA

Range bracket/interface: VESA 75, 100, 200-100, 200

Tilt function: +15° till -15°

Mounting system: 170 x 140 mm



Mount size:

VESA 75	M4
VESA 100	M5
VESA 200-100	M5
VESA 100-200	M5
VESA 200	M6
VESA 200	M8

